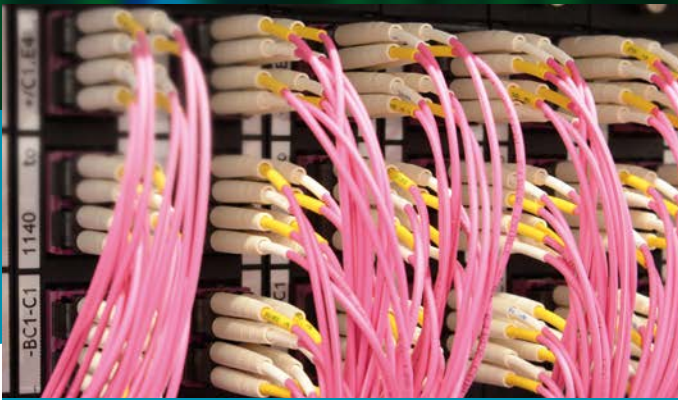


# A COMPARISON OF DATWYLER'S SYSTEM SOLUTIONS

NEW



**DATWYLER DATACENTER SOLUTION (FO-DCS)**



**HIGH-DENSITY DATACENTER SOLUTION (HD-DCS)**

FO-DCS is a future-proof, preassembled plug-and-go fibre optic solution characterised by high-quality cables and components and a high-precision connector assembly. Its outstanding optical and geometric values make it suitable for all current and future high-speed applications in data centres. Modular components can be combined as required, thus providing users with the ultimate in design flexibility.

#### Performance features:

- Simple installation with intuitive labelling and easy access from the front
- High quality 3U/7HP plug-in modules
- Connectivity solutions with MTP, LDC and LCQ
- Breakout and splice solutions available
- Simple integration of copper connections



The HD-DCS offers users the same quality features as the FO-DCS plus more than twice the port density and even greater flexibility. The housings have integrated cable management, which makes installation and maintenance easier. Port labelling is also simpler and more flexible.

#### Performance features:

- Extremely compact solution with maximum port density (MTP and LCD)
- Flexible assembly with plug-in modules of different size/port density (6, 12, 24)
- Integrated cable management and labelling system
- Compact patch cables (2 mm) with push-pull tabs
- Patch and breakout cables with CPR classification (up to B2<sub>ca</sub>)



# FO-DCS VS. HD-DCS

CRITERION	FO-DC Solution	HD-DC Solution
		
<b>Solution</b>	Standard	Premier
<b>Max. number of ports on 1U</b>	36	96
<b>Max. number of ports on 4U</b>	144	384
<b>Connection types</b>	LCD, LSH-C, (SCD), MTP	LCD, MTP
<b>Fibre types</b>	OM3, OM4, G.652.D (BLO)	OM4, G.652.D (BLO)
<b>Max. number of fibres / 1U - LCD</b>	72	192
<b>Max. number of fibres / 1U - MTP<sub>12</sub></b>	432	1152
<b>Max. Number of fibres / 4U - LCD</b>	288	768
<b>Max. number of fibres / 4U - MTP<sub>12</sub></b>	1728	4608
<b>LCD adapters with integral dust cover</b>	-	●
<b>Splice module</b>	●	-
<b>Breakout module</b>	●	●
<b>Copper module with 6x RJ45</b>	●	-
<b>FO module with 6 ports</b>	●	●
<b>FO module with 12 ports</b>	●	●
<b>FO module with 24 ports</b>	-	●
<b>Patch cable, round, 2 mm</b>	●	●
<b>Patch cable, round, 3 mm</b>	●	-
<b>Patch cable management 0U</b>	● (only with 4U subrack)	●